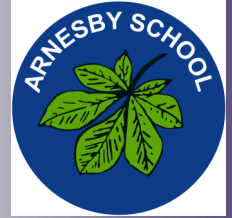


# ARNESBY SCHOOL NEWSLETTER

## 29th August 2025



Welcome back everyone.

We've already had a busy start to the year with our new EYFS outside area being officially opened by Embrace Trust CEO Sharon Mullins and our new library is now installed and ready to take new books.

Big thanks for Embrace Trust who continue to support us in many different ways this year especially with maintenance such as decoration and repairs of the building along with installation of the new library and outside area for foundation stage as we continue to offer our children the best we can in learning opportunities.



The children are happy and settled and we have welcomed our new families to the school to be part of our thriving community.

The PTA have already scheduled a programme of new and traditional events across the year and so we are really looking forward to an excellent year of learning and experiences.

Please spread the word about our school open days as we would love to share our lovely school with more children and families.

Mrs James

### UPCOMING EVENTS:

#### 160 year Anniversary of the School

**17th September - Victorian Day—everyone in Victorian Dress please**

**18th September Procession from school to the Church**

#### Friday 26th September

**First of the School open days for prospective parents**

Visits in school for prospective parents .

Please book an appointment with the school office.

Remember our school hours are:

**School opens 8.35am Gates close at 8.45am**

**Learning starts at 8.45am prompt**

**End of school: 3.15pm**

**Matthew**

Jesus as the King

**Mark**

Jesus as a servant

**Luke**

Jesus as the saviour

**John**

Jesus as God

Matthew 5: 14 "You are the light of the world. A city on a hill cannot be hidden "

**AUTUMN TERM**

Curiosity, Respect, Thankfulness, Independence, Resilience, Forgiveness, Honesty, Teamwork, Koinonia

Our new EYFS area is officially opened!



Peace Class  
enjoying the  
new outside  
area.



Matthew 5: 14 "You are the light of the world. A city on a hill cannot be hidden "

AUTUMN TERM

Curiosity, Respect, Thankfulness, Independence,  
Resilience, Forgiveness, Honesty, Teamwork, Koinonia





## Our new library!



Estates Team over the summer holidays.

Big thanks to the PTA who have been fund-

### Our new library is taking shape!

All shelving was installed earlier this week after redecoration and new carpeting was completed by the Embrace



raising to help us buy new books for the library over the last year.

We have been sorting and carefully selecting the books but there is still some way to go before we are ready with

filled shelves with new books that children will be excited to take out, bor-

row and most importantly read!

Watch this space!



Matthew 5: 14 "You are the light of the world. A city on a hill cannot be hidden "

AUTUMN TERM

Curiosity, Respect, Thankfulness, Independence, Resilience, Forgiveness, Honesty, Teamwork, Koinonia



WHERE EVERY CHILD SHINES

Open days for new parents  
to show them around our wonderful school.



Please share these dates with friends and let them know that we have places available for September even if they are out of our catchment area.



# Arnesby C of E Primary School



**Arnesby is a small school with a big heart, where every child shines.**  
As a rural village school with small class sizes, we have a unique character and close-knit community, where every child is known.



## Visit our school open days

**Friday 26th September**  
**Thursday 9th October**  
**Friday 7th November**

Tour 1: 9:30am | Tour 2: 1:30pm

**BOOK NOW!**



 **0116 247 8563**  
Mill Hill Road, Arnesby, Leicestershire, LE8 5WG

 **Embrace**  
Multi-Academy Trust

Matthew 5: 14 "You are the light of the world. A city on a hill cannot be hidden "

AUTUMN TERM

**Congratulations to Tricia who got married over the summer and is now Mrs Tricia Lawson.**

Curiosity, Respect, Thankfulness, Independence,  
Resilience, Forgiveness, Honesty, Teamwork, Koinonia





# ATTENDANCE MATTERS!



Our attendance is:

**98.2%**

Keep attending every day it makes such a difference to the children's learning and social interaction.

Please help us keep it at

**97% or better!**

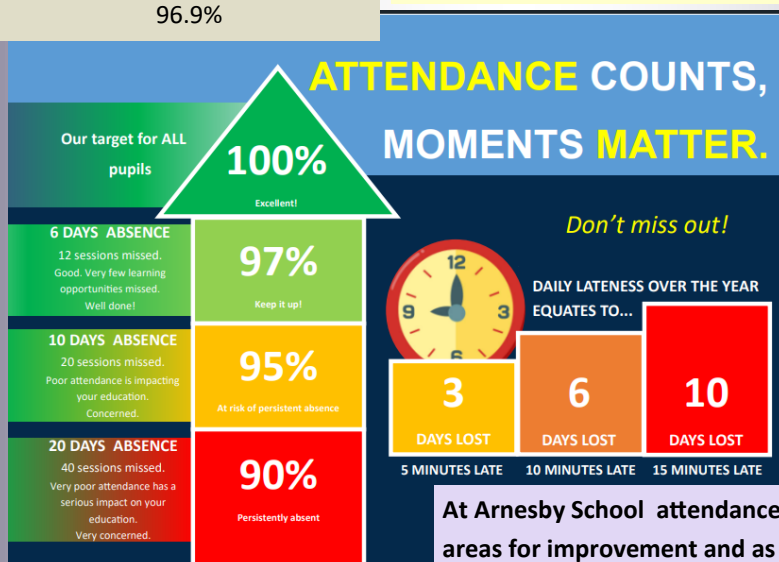
Last newsletter was:

96.9%

Thank you

Thank you to all parents and carers who have supported the school by getting your children to school on time.

It makes such a huge difference to their learning at the start of the day as all classes have start of the day activities which wakes up their brains and gets us all ready for a busy school day !



Remember our school hours are:

**School opens 8.35am**

**Gates close at 8.45am**

**Learning starts at 8.45am prompt**

At Arnesby School attendance is one of our areas for improvement and as such, is a high priority.

We must have a high level of attendance across the school to ensure that all children are given the best education possible.

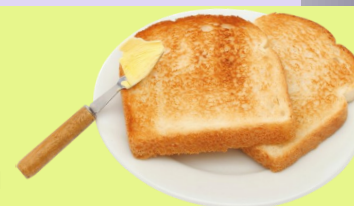
Please support us in getting your children in school every day and on time.

## BREAKFAST CLUB

Our breakfast club is available from 8am to 8.45am facilitated by different members of staff.

In order to continue to offer our help to working parents and carers, please book places for the breakfast club **a week in advance** and especially not over the weekend for a place on the following Monday or Tuesday morning.

Thank you.



AUTUMN TERM

Matthew 5: 14 "You are the light of the world. A city on a hill cannot be hidden"

Curiosity, Respect, Thankfulness, Independence, Resilience, Forgiveness, Honesty, Teamwork, Koinonia



## Breakfast and After school clubs



Breakfast and afterschool club's are an important part of the schools offer and Mrs. James would like to organize a parent forum to help decide what clubs are needed or preferred going forward, including times and activities. If you are interested in being part of this focus group please let Mrs. James know via the school office and fill in the Microsoft form (to follow) which will help us to find a suitable day and time.

The next academic year will see a price increase for both clubs as these have been maintained at the same price for more than 2 years. Breakfast Club will increase 50p to £3.50 and After school Club will increase by 50p to £4.50. from next term. Booking is done in the usual way and all times remain the same at present.

We have worked with the school sports offer through Super Star Sports and have decided that each day will now have a focus sport. These sports will run for the half term and we will change the focus each half term based on the feedback from children and parents. Please try and support these clubs if you can.

**Arnesby Primary School**

**Monday**  
★ Gymnastics

**Tuesday**  
★ Ultimate Frisbee

**Wednesday**  
★ Hockey

**Thursday**  
★ Archery

**Term Dates**  
W/C 1<sup>st</sup> Sep - 17<sup>th</sup> Oct  
15:15PM - 16:30PM

**To book your child on, please use your My Child at School account.**

Art Club is run by Cerys Mee on a Wednesday and continues to be a popular choice. The cost of this will now increase to £5 a session to cover materials and art supplies.

Curiosity, Respect, Thankfulness, Independence,  
Resilience, Forgiveness, Honesty, Teamwork, Koinonia