

ARNESBY SCHOOL NEWSLETTER

20th December 2024



Christmas message

We have come to the end of a very busy and successful term and Christmas will very soon be here! We should be very proud of what we have achieved together as a community; staff, pupils, parents/carers, clergy and governors this term. The Nativity performances showed confident children which was very special and allowed us to bring so many families and friends in our community together. I was delighted to see such overwhelming support for this and the village lantern walk. To everyone that made these events happen, thank you.

I would also like to thank you as parents and carers for all you have done to support your child in school this term. From tidy and correct uniform, which really makes such a notable difference for visitors to our school, to prompt arrival times and homework support. Thank you for your support for staff too as we all work together for your children in our wonderful school.



*"As we celebrate a child born for us, a son given to us,
make the light of Christ bright in our own hearts
that we may once more bring peace and reconciliation to our families,
our communities, and to our world"*

Wishing you all good health and happiness for the new year.
Mrs James

UPCOMING EVENTS:

[Visits in school for prospective parents](#)

[Please book an appointment with the school office.](#)

Spring term starts Monday 6th January 2025

Year 5 and 6 Bikeability

**Wednesday 8th and Thursday 9th January
(bikes ready prepared please)**

Save the date:

Parents evening

Wednesday 26th February and Thursday 27th February

5th March

Ash Wednesday service in Church

Matthew

Jesus as
the King

Mark

Jesus as a
servant

Luke

Jesus as
the
saviour

John

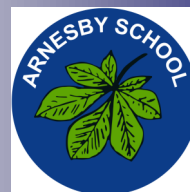
Jesus as
God

"I am come that they might have life, and that they might have it more abundantly". John 10.10

AUTUMN TERM

Curiosity, Respect, Thankfulness, Independence, Resilience, Forgiveness, Honesty, Teamwork, Koinonia

What's happening in school?



Shining in the Nativity

Well done to everyone who performed so beautifully in the Nativity play – It's a party. You were all stars shining brightly!



"I am come that they might have life, and that they might have it more abundantly". John 10.10

AUTUMN TERM

Curiosity, Respect, Thankfulness, Independence, Resilience, Forgiveness, Honesty, Teamwork, Koinonia





"Where every child shines"

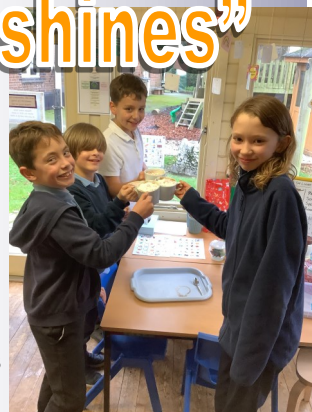
Faith group and hot chocolate!

As a thank you to the Faith group for their help in worship this term, we had a hot chocolate chat to talk about their ideas for the next two terms. We have



enjoyed the prayer spaces and assemblies so watch this space for more of them.

The School Council also had a chance to share their thoughts and views along with a hot chocolate!



Some great ideas to look out for next term.

POP UP PRAYER SPACE

Angels appeared at different times throughout the Christmas story. The angels were amazing in appearance – maybe even scary – but they brought amazing news about the birth of Jesus, God's son.



Reflection

The child had time to reflect on what it might be like to meet an angel! What would they say? 'WOW?'

The children then wrote a response or drew their idea onto a paper angel.

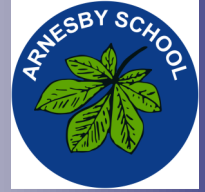


AUTUMN TERM

"I am come that they might have life, and that they might have it more abundantly". John 10.10



Friends of Arnesby Primary



Cinderella



We had a great time at the Pantomime on Wednesday at the Century Theatre. (Oh know we didn't, Oh yes we did!!)

The children have produced some interesting writing about all aspects of the show using the writing skills they have learnt this term.



A big thank you to the Friends of Arnesby who supported the trip by funding the tickets.

We loved it!

WHERE EVERY CHILD SHINES



Thank you to everyone who supported the Lantern Walk around the village on Thursday. Another great success for the PTA and for the community. Thank you to Mr Kearney for the musical accompaniment.

Pancake Pandemonium

Thank you to all those children and adults who chomped their way through mountains of pancakes on our final morning this term.

Well done!



Remember we are back at school on 6th January :

School opens 8.35am Gates close at 8.45am

Learning starts at 8.45am prompt

End of school: 3.15pm

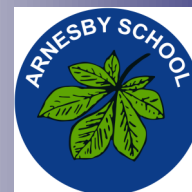
Curiosity, Respect, Thankfulness, Independence, Resilience, Forgiveness, Honesty, Teamwork, Koinonia



"I am come that they might have life, and that they might have it more abundantly". John 10.10

AUTUMN TERM

Charity round up



December

Wearing our Christmas jumpers in school this year on Christmas Jumper Day raised £30.50 for Save the children.



November

Wearing something spotty for Children in Need this year raised £44.20

There were some super outfits!



October

Blytheswood Christmas appeal to fill a shoebox was well supported and we sent 24 boxes to Ukraine for families in need.

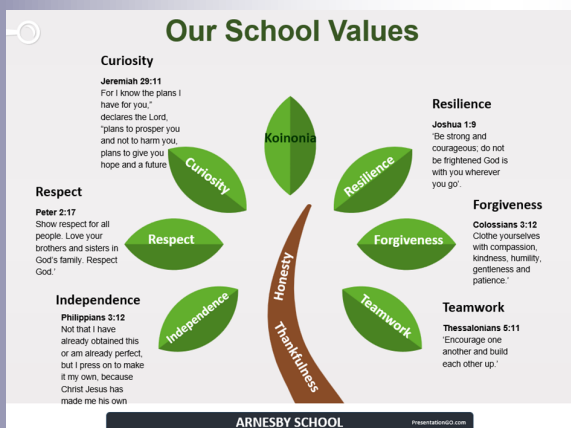
**LUTTERWORTH AND VILLAGES FOODBANK
HELPING LOCAL
PEOPLE IN CRISIS**

September/October

Our Harvest Festival donation this year was once again to Lutterworth food bank where we sent 4 extra large shopping bags full of food for families in need.



Thank you Arnesby parents and carers for your generosity in helping others in their times of need. As we teach children about Courageous Advocacy these acts of generosity we hope will sow seeds for their future of charity towards others who need to be heard and supported.



"Give to everyone who asks you, and if anyone takes what belongs to you, do not demand it back".

Luke 6:30

AUTUMN TERM

Curiosity, Respect, Thankfulness, Independence, Resilience, Forgiveness, Honesty, Teamwork, Koinonia



ATTENDANCE MATTERS!



**MOMENTS
MATTER,
ATTENDANCE
COUNTS.**

Keep attending every day it makes such a difference to the children's learning and social interaction.

Our attendance so far is: 97.6%

Last newsletter was: 97.6%

At Arnesby School attendance is one of our areas for improvement and as such, is a high priority.

We must have a high level of attendance across the school to ensure that all children are given the best education possible.

Please support us in getting your children in school every day and on time.

Remember our school hours are:

School opens 8.35am Gates close at 8.45am

Learning starts at 8.45am prompt

Children arriving after 8.45 will be marked as late and MUST go directly to the school office for sign in NOT to the class as learning will have started.

End of school: 3.15pm

Our breakfast club is available from 8am to 8.45am facilitated by different members of staff.

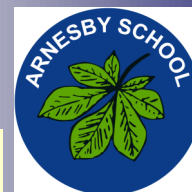
In order to continue to offer our help to working parents and carers, please book places for the breakfast club **a week in advance and especially not over the weekend for a place on the following Monday or Tuesday morning.**

Thank you

"I am come that they might have life, and that they might have it more abundantly". John 10.10

AUTUMN TERM

Information



Non-uniform day on Friday 10th January for the house point winners of LUKE House. Well done!

Class Points

598

House of Matthew

586

House of Mark

686

House of Luke

561

House of John

PE Kits

Please could all Key stage 2 children have their PE kits in school every day. We have noticed that more children are not bringing in their kits and PE requires that children have the appropriate clothing for the activities including stretching and aerobic activities. Thank you

Widening children's aspirations

Mrs James would like to invite parents, grandparents, other relatives, and friends into school to talk to the children about their jobs and what is interesting about them. Are you a scientist? A professional dancer? A farmer? An engineer?

If you think you can help or know someone who might be willing to talk to our wonderful children, please contact Mrs James via the school office.

Thank you.

A polite reminder around parental debt

School meals, clubs and trips are to be paid for in advance via your My Child at School account.

If debts are incurred, then the school budget has to pay for them. This means that money which should be spent on all pupils' learning in school is used to pay for debts incurred by individual parents/carers.

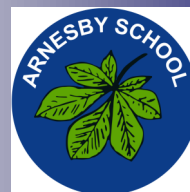
We hope that parents/carers understand this and make every effort to avoid owing the school money.
Thank you

"I am come that they might have life, and that they might have it more abundantly". John 10.10

AUTUMN TERM



Keeping Children Safe



When children are home from school during the holidays, they can end up spending more time online.

It can help to have regular conversations about their online activities, just like you would about their day at school. This can help them feel comfortable sharing any worries with you.

At National Online Safety, we believe in empowering parents, carers and trusted adults with the information to hold an informed conversation about online safety with their children, should they feel it is needed. This guide focuses on one of many issues which we believe trusted adults should be aware of. Please visit nationalonlinecollege.com for further guides, hints and tips for adults.

Top Tips for SETTING UP PARENTAL CONTROLS ON NEW DEVICES

In children's eagerness to start enjoying new digital gadgets immediately, it can be easy to overlook setting up the type of parental controls that can help to protect them online. If you don't sort those out from the very start, it can be an uphill battle – technologically and psychologically – to impose such controls later. Here's our rundown of what to look for when setting up the various internet-enabled devices that might be lurking under the tree at this time of year.

IPHONE

If your child's lucky enough to be getting their own iPhone, parental controls can help avoid issues like screen addiction and unsuitable content. Go into the settings and scroll down to 'Screen Time'. From here you can customise important settings including time limits on using the device, communication restrictions and content blockers. You can also lock your changes behind a passcode.

ANDROID

With Android devices, Google's Family Link app is your friend. You'll need a Google account – and a separate one for your child, which you should use when first setting up the device. Then, in Family Link on your own device, select 'Add Child' and enter their account details. This lets you specify limits on daily usage, restrict certain apps, block particular content and more.

PLAYSTATION

You can prep for a PlayStation before it's even unwrapped. At myaccount.sony.com, create an account, then go to Account Management > Family Management > Add Family Member to set up your child's account, which you'll use to sign in on the console. You can restrict the age ratings of the games they can play and who they can talk to. On the PS5, you can make exceptions for any games you think are acceptable despite their high age rating.

IPAD

iPad parental controls are identical to those on iPhones. However, if you've got a shared family iPad and want to ensure your children aren't seeing anything age-inappropriate after you hand them the device, there's a feature called Guided Access (under Settings > Accessibility > Guided Access). With this switched on, young ones can only use the app that's currently open.

XBOX

The Xbox Family Settings app helps you manage which games your child can play (and when). You'll need to set up the console with your own account and then add a child profile. Make sure your account's password protected, so your child can't alter your choices later. You'll be walked through the functions at setup, but you can also reach them manually via Settings > Account > Family Settings.

NINTENDO SWITCH

Download the Nintendo Switch Parental Controls app on your phone, and you'll be shown how to link it to the console. Once that's done, you can limit how long your child can play each day, decide what age ratings are permitted and more. You'll also get weekly updates on how often they've used the device. These controls are accessible through the console itself, but the app is usually easier.

WINDOWS 11 PCS

On Windows 11, account management is key. Set up the device with your own account as the admin. Then go to Settings > Accounts > Family and Other Users and create your child's account (if you've already done this on a previous PC, just log in with those details). Microsoft Family Safety (either the app or the site) then lets you control screen time, what content children can view and more.

CHROMEBOOKS

Chromebooks' parental controls are managed via the Family Link app. Unlike an Android device, however, you need set up the Chromebook with your own account first, then add your child's. Go to Settings > People > Add Person and input your child's Google account details (or create a new account). Your child can then log in, and you can monitor what they're up to via Family Link.

MACS

Like iPhones, parental controls for Macs are managed via the Screen Time settings. Again, the crux here is to set yourself up as the administrator before adding any child accounts. In the settings, look for Users & Groups to create your child's account, then – while on their profile – use the screen time options to place any boundaries around apps, usage and who your child can communicate with (and vice versa).

SMART TVs

Smart TVs typically have their own individual parental controls. One of the most popular brands is Samsung – and on their TVs, you can control the content available to your child. In the Settings menu, under 'Broadcasting', you can lock channels and restrict content by its age rating. Even this isn't foolproof, however: some apps (like YouTube) might still let children access unsuitable material.

Meet Our Expert

Barry Collins is a technology journalist and editor with more than 20 years' experience of working for titles such as the Sunday Times, Which?, PC Pro and Computeractive. He's appeared regularly as a tech pundit on television and radio, including on BBC Newsnight, Radio 5 Live and the ITV News at Ten. He has two children and writes regularly on the subject of internet safety.



The National College

NOS National Online Safety
#WakeUpWednesday



@natonlinesafety



/NationalOnlineSafety



@nationalonlinesafety



@national_online_safety

Users of this guide do so at their own discretion. No liability is entered into. Current as of the date of release: 20.12.2023

Curiosity, Respect, Thankfulness, Independence, Resilience, Forgiveness, Honesty, Teamwork, Koinonia

Embrace
Learning for Life

WHERE EVERY CHILD SHINES

"I am come that they might have life, and that they might have it more abundantly". John 10.10

AUTUMN TERM