

# ARNESBY SCHOOL NEWSLETTER

## January 19th 2024



WHERE EVERY CHILD SHINES

Welcome back to the Spring term. We are looking forward to great term of learning with our topics geography based. We have made a wonderful start and children are learning about frozen landscapes and discovering polar exploration in Endurance Class , volcanoes, fossils and earthquakes in Courage class and coastlines and beaches in Peace class. If anyone is an expert in any of these areas (or knows an expert who would like to share their knowledge), we would love to hear from you!

Peace Class have shown their independence and enthusiasm to come into school at the start of each day and have been rewarded with stickers. This has now moved into Dojo points and the children have really enjoyed seeing their totals increase each day. Well done.

Finally, look out for any messages on Class Dojo particularly if bad weather is expected.

Mrs. James

### UPCOMING EVENTS:

*Visits in school for prospective parents  
Please book an appointment with the school office.*

**22nd January 2024**

**Dodgeball festival for year 3 and 4**

**Wednesday 31st January 2024**

**Endurance sharing assembly  
Come and celebrate our learning 2.40**

**Friday 9th February 2024**

**Peace Class sharing assembly 9am**

**14th February 2024**

**Ash Wednesday service in Church 2.30  
All welcome.**

Matthew

Mark

Luke

John

*"For God, who said, "Let light shine out of darkness," has shone in our hearts to give the light of the knowledge of the glory of God in the face of Jesus Christ". 2 Corinthians 4:6*

SPRING TERM 2024

Remember our school hours are:

**School opens 8.35am Gates close at 8.45am**

**Learning starts at 8.45 prompt**

**End of school: 3.15pm**

Curiosity, Respect, Thankfulness, Independence, Resilience,  
Forgiveness, Honesty, Teamwork, Koinonia



## ADVERSE WEATHER CONDITIONS



We will endeavour to keep our school open and operating as normal. However, in the event of severe adverse weather it may be necessary to make a decision to close the school for the safety of the children and staff. Following the Severe Weather Guidance from the Local Authority, the following policy and procedure exists for Arnesby Church of England Primary School.

**The decision to close will be made by the Headteacher in consultation with the Chair of governors considering the following:**

**Health and safety – will remaining open constitute a significant risk to pupils and/or staff.**

**Availability of staff – has the severe weather meant that a significant number of staff have been unable to attend making it impossible to open.**

**Our first priority will always be to ensure the health, safety and wellbeing of pupils, staff, parents and families.**

We will clear paths within school to make access as safe as possible, and will keep supplies of grit to support this. Care is always needed when using pathways that have been gritted. Full Risk Assessment is reviewed annually for any changes.

### **School Closure Procedure:**

Once the decision to close school has been taken, parents and staff will be informed via our **Bromcom/My Child at School service**.

A **headline message** will also be posted on the School website ([www.Arnesby.embracemat.org](http://www.Arnesby.embracemat.org)) and on our **Class Dojo service**.

In addition, the Headteacher Mrs James will **contact BBC Radio Leicester** at the earliest opportunity giving the required information so that the closure of our school can be broadcast.

Where possible, a member of staff will be in school to advise parents and families on arrival that the school is closed, and to answer telephone calls .



*“For God, who said, “Let light shine out of darkness,” has shone in our hearts to give the light of the knowledge of the glory of God in the face of Jesus Christ”. 2 Corinthians 4:6*

SRING TERM 2024

What's happening in school?



Peace Class—shining as pirates and seafarers



This week was pirate week in reception and on Wednesday afternoon peace class had a pirate afternoon. We had so much fun.



We found out about what pirates did and their jobs. We made pirate names for ourselves which made us laugh a lot and learnt some pirate sayings.

We made pirate boats using different materials. we tested them to see if they would float or sink. We designed flags for our boats and we dug for buried



treasure. We made our own maps to find treasure and made parrot maps.



Curiosity, Respect, Thankfulness, Independence, Resilience, Forgiveness, Honesty, Teamwork, Koinonia

For God, who said, "Let light shine out of darkness," has shone in our hearts to give the light of the knowledge of the glory of God in the face of Jesus Christ". 2 Corinthians 4:6

SPRING TERM 2024



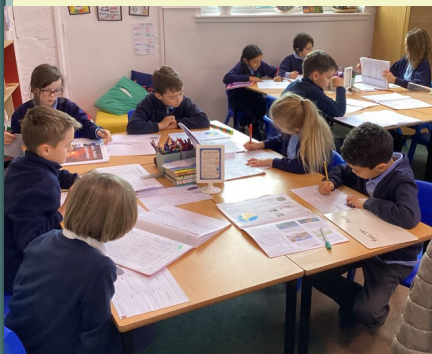
What's been happening in school?



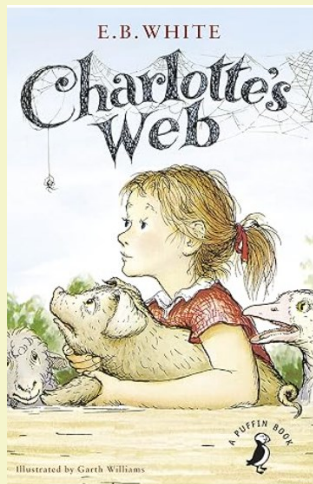
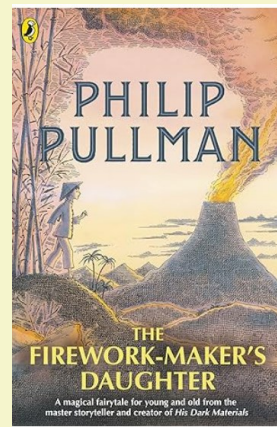
**Courage Class shining in English and Maths.**

Courage class have been learning about their new topic Rocks ,relics and rumbles and have been exploring different rocks and learning about their properties and composition.

They have been fascinated by the different rock colours and by different fossils too.



English linked to the topic and children have been reading the early chapters of the book Firework Makers daughter by Philip Pullman for their English writing .



The guided reading text is Charlottes Web by E B White. Children are enjoying reading their own books too and we have already spotted some greedy readers this term!

In maths children have enjoyed some maths games pictured here and are currently learning about fractions



“For God, who said, “Let light shine out of darkness,” has shone in our hearts to give the light of the knowledge of the glory of God in the face of Jesus Christ”. 2 Corinthians 4:6

SRING TERM 2024

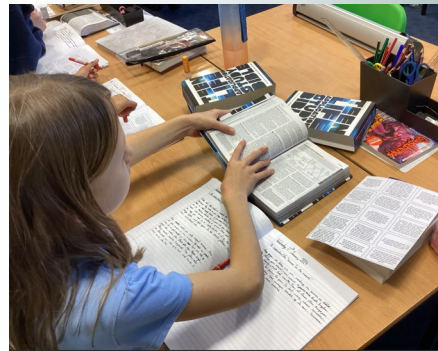
What's been happening in school?



**Endurance class shining in curiosity**

We're now half way through January and we in Endurance class have hit the ground running with our new projects for this term.

In English we've been looking at advertising and using persuasive techniques to convince people to travel. We've got three different holidays to choose from – Nuut, Greenland; Kinngait, Nunavut (Canada); and Anchorage, Alaska. So if you start getting some very convincing requests for trips to the Arctic, I can only apologise!



Maths has had us working on ratio and proportion – and now we're moving on to algebra. The approach to these new fields of mathematics has been undertaken with some trepidation, but with a level of resilience and curiosity that this class has demonstrated this year.

In science we're exploring the shocking world of electricity, examining different components and looking at ways of setting up complete circuits. We've had a look at how we can test different components to ensure they work, how to record and draw circuit diagrams and the multitude of different ways we're able to use electricity in the modern day.



RE is exploring the question "What Would Jesus Do?" We're exploring how people use different rules and role models to inform their actions, and looking specifically at how Christians take the example and teachings of Jesus to help them understand how to respond to questions in day to day life.

Our Geography topic this term is Frozen Kingdoms, giving us the opportunity to look into some of the most remote and inhospitable places on the planet. We will be looking at the weather and climate of the poles, as well as looking into their topography, seasons and climate, studying the plants, animals and people that call some of the most dangerous places on Earth home.

Finally, we have two books on the go in Endurance class. Our novel study is **The Wolf Wilder** by Katherine Rundell – a fairy tale of tenacity, loyalty, acceptance and (appropriately) endurance set in the frozen winter world of early 20<sup>th</sup> Century Russia. Our class book is the excellent **Holes** by Louis Sachar. From the frozen forests of 1917 Russia, to the blazing heat of the Chihuahuan Desert, we follow the story of Stanley Yelnats IV in a story of luck, curses, love, loss, tenacity and hope.

Endurance class has made an excellent start to the New Year, and to the New Term. We'll keep up the hard work, and will continue to shine throughout the rest of the year.

*"For God, who said, "Let light shine out of darkness," has shone in our hearts to give the light of the knowledge of the glory of God in the face of Jesus Christ". 2 Corinthians 4:6*

SRING TERM 2024



What's been happening in school?



Wombles In Litter Education

The only cure for LITTER is you.



They presented us with a certificate, a story book about litter picking and badges for our own litter picking team!

Have a go at home, matching the items with the length of time it takes to biodegrade—answers in the next newsletter!

Match the item to a length of time

Paper bag		2 years
Banana skin		10 years
Rolled up newspaper		Never
Aluminium can		1 month
Nappy		100 years
Glass bottle		500 years

We had a great informative visit from the local Wombles—litter pickers who keep Leicestershire's hedges clean and litter free.

WILE (Wombles in Litter Education) talked to us about how long things take to break down, decompose and biodegrade. We found out why recycling is better for the environment and our planet's future.

We saw a huge array of items that had been collected including an i-pad on a drone, drink cans from the 1970's and even a WW1 helmet!



*"For God, who said, 'Let light shine out of darkness,' has shone in our hearts to give the light of the knowledge of the glory of God in the face of Jesus Christ". 2 Corinthians 4:6*

SRING TERM 2024



# ATTENDANCE MATTERS!

School attendance since the beginning of term is: **92.8%** which is **reduction since the last newsletter (93%)**

This is now significantly below our expectation and target, please help us by getting children into school everyday.

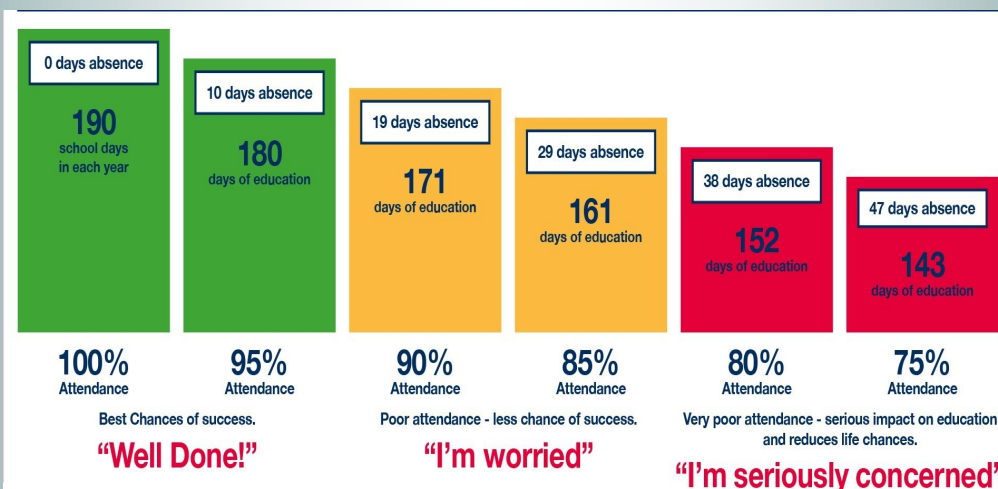
At Arnesby School attendance is one of our areas for improvement and as such, is a high priority.

We must have a high level of attendance across the school to ensure that all children are given the best education possible.

Please support us in getting your children in school every day and on time.

It is vital that children are in school every day to maximise their life chances.

WHERE EVERY CHILD SHINES



Remember our school hours are:

**School opens 8.35am Gates close at 8.45am**

**Children arriving after 8.45am will be marked as late and MUST go directly to the school office for sign in NOT to the class as learning will have started.**

**End of school: 3.15pm**

For God, who said, "Let light shine out of darkness," has shone in our hearts to give the light of the knowledge of the glory of God in the face of Jesus Christ". 2 Corinthians 4:6

SRING TERM 2024

Curiosity, Respect, Thankfulness, Independence, Resilience, Forgiveness, Honesty, Teamwork, Koinonia



Parent survey results



Thank you to all parents who responded to the school Questionnaire at the end of last term. It is really helpful to have the feedback and helps the school to improve for all our children.

The questions were based on the Ofsted questions for direct comparison. We had 15 responses and in the table below are our highest 3 and lowest 3 with comments.

The results of the five additional questions and the associated comments relating to Arnesby school will be shared in the next newsletter.

Arnesby Parent Survey % Agree to strongly agree except where otherwise stated.	September 2023 21 respondents	December 2023 15 respondents	Difference
<b>HIGHEST THREE</b> You said:			
The school has high expectations for my child.	66%	80%	+14%
We are delighted that the children are responding very well to our improvements in everything we do, and this is an excellent improvement result.			
There is a good range of subjects available to my child at this school.	66%	80%	+ 14%
As we are improving the curriculum, the depth of subjects and knowledge continues also to develop.			
The school supports my child's wider personal development.	67%	80%	+13%
School trips and visitors have made a big difference to this result, and we will continue to provide opportunities for children to experience more inside and outside school.			
<b>LOWEST THREE</b> We did:			
My child has been bullied and the school dealt with the bullying quickly and effectively.	5% disagreed	20% disagreed	-15%
Any form of bullying is unacceptable, and we have raised staff awareness at breaktime and lunchtime which can be key times, to monitor carefully, deal with and subsequently report any behaviour concerns including comments made in supposed jest or fun. Children know how to report any concerns they have however small it may appear.			
The school makes me aware of what my child will learn during the year.	76%	71%	-5%
All topic titles are now shared with parents in advance whether through the newsletters, homework, or other communication from the class teacher. The curriculum for the term is updated on the class page on the school website which covers all the subjects. Teachers send home either electronically or paper copies, knowledge organisers based on the Cornerstones topics. These cannot be shared on the school website for copyright reasons. Phonics for EYFS and KS1 are shared with parents as well as age-appropriate spelling lists for KS1 (common exception words) and KS2 based on the National Curriculum requirements. Learning is shared with parents through newsletters and sharing assemblies.			
The school makes sure its pupils are well behaved.	90%	86%	-4%
Although a small decrease to this question, we have made significant effort in the Autumn term and the Spring term to ensure that children know the Ready, Respectful and Safe rules to ensure good behaviour in school and when representing the school on a school trip. This includes a good attitude to learning and this is rewarded through dojo points, especially those that reflect the school values. Children now achieve dojo points for good behaviour, and we hope to see this figure rise back up to 90% again.			

"For God, who said, "Let light shine out of darkness," has shone in our hearts to give the light of the knowledge of the glory of God in the face of Jesus Christ". 2 Corinthians 4:6

SPRING TERM 2024





# “Where every child shines”

In school we are learning about British Values as they are very important for how we aim to live in modern Britain to be good citizens.

We can remember what the British values are by thinking of ‘Dr Tim’

**Democracy** – we decide things together, not just one person who tells everyone else what to do.

**Rule of Law** – we believe we can’t live together well unless everybody obeys the rules.

**Tolerance** – Even when we disagree with people, it doesn’t mean we can’t be friends and work together.

**Individual Liberty** – we should all be able to say what we think and make our own choices in life.

**Mutual Respect** – all people are valuable and have something to offer

Christians are aiming at something too. They are aiming at a person. A person who showed us how God wants us to live. That person is Jesus.

St Paul wrote a letter where he told Christians;

“Follow my example, as I follow the example of Christ.” 1 Corinthians 11:1



“For God, who said, “Let light shine out of darkness,” has shone in our hearts to give the light of the knowledge of the glory of God in the face of Jesus Christ”. 2 Corinthians 4:6

SPRING TERM 2024

## CELEBRATE

At Arnesby School we want to celebrate all children’s achievements and see them shining in many aspects of their lives.

If you would like to share something with us that your child has achieved outside school, please send in a photograph and a short explanation to the office email and we will include it in our next newsletter.

## Keeping Children Safe



In preparation for any warmer weather or time outside in cold weather, bicycle safety is important.



If your child wants to use their bike at home or travel to school by bicycle, make sure that they can be seen easily.

Here are a few tips to help:

Always wear bright-coloured or reflective clothing. Loose-fitting clothing should be avoided (it could get caught in wheel spokes) and sturdy, closed-toe shoes.

Don't ride when it's dark but if your child rides at dawn or dusk, make sure they use reflectors and lights.

Ensure your child has safe control of the bicycle. Both hands should be kept on the

bike's handlebars.

Books and other items should be carried in a backpack.

Make sure your child can hear oncoming traffic. Children should be supervised in their journey to school and be able to store their bike safely in the bike shelter.



*"For God, who said, 'Let light shine out of darkness,' has shone in our hearts to give the light of the knowledge of the glory of God in the face of Jesus Christ". 2 Corinthians 4:6*

SRING TERM 2024

