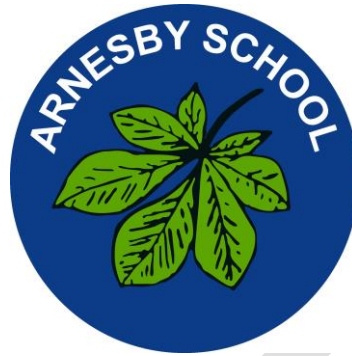


# ARNESBY C E PRIMARY SCHOOL

'Where every child shines'



## COLLECTIVE WORSHIP POLICY

### School Values:

**Curiosity:** opportunities for children to achieve their best and have positive learning attitudes.

**Respect and thankfulness:** for others, our environment and celebrate our differences.

**Independence:** a sense of responsibility for ourselves and the world around us.

**Resilience:** showing courage, determination and perseverance.

**Forgiveness and honesty:** living by our values and morals.

**Teamwork and koinonia:** working together in our community with love for all.

*"Shout for joy to the LORD, all the earth."*

*"Worship the LORD with gladness; come before him with joyful songs."*

*"Know that the LORD is God. It is he who made us, and we are his; we are his people, the sheep of his pasture."*

Date of Review:	April 2024
Next Review:	April 2026
Approval By:	Chair of Governors
Review Frequency	Every two years

**Arnesby CE Primary School is committed to safeguarding and promoting the welfare of children, and this policy supports this commitment.**

### **Embedding Pupil Safeguarding Awareness in the Curriculum**

All teachers incorporate elements of safeguarding into their lessons where appropriate. This involves:

- informal conversations
- teacher/pupil discussions
- briefings for outings and trips (road safety / clever never goes)
- implementing an E-Safety Policy regarding the use of ICT
- an awareness of potential hazards in lessons and identifying risks and danger.

Safeguarding is also about pupils' emotional wellbeing. Teachers encourage pupils to speak out if there is something worrying them, or if they are aware of, or witness, something that is unacceptable, untoward, or disturbing. Staff promote tolerance and respect for each other and an acceptance of individual differences. They help pupils to develop confidence and resilience and discuss what to do if things go wrong. Staff are approachable and show their willingness to always help pupils.

### **British Values**

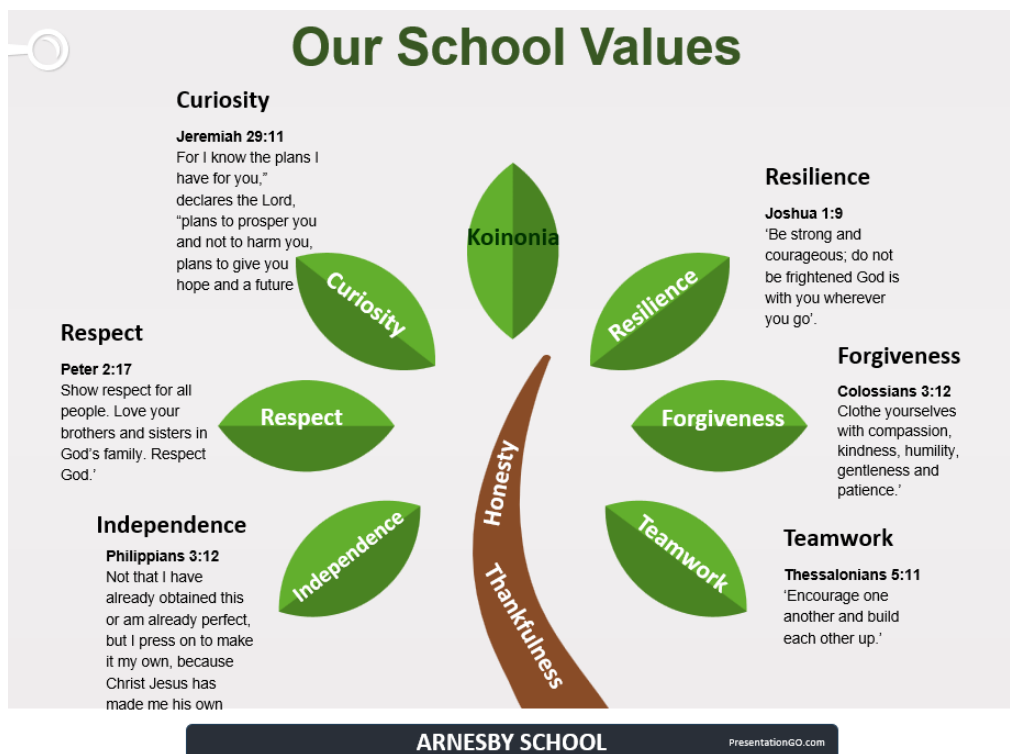
At Arnesby C of E Primary School, we promote the fundamental British values of democracy, the rule of law, individual liberty, and mutual respect and tolerance of those with different faiths and beliefs. This includes:

- paired and group work, and sharing and working together
- making choices with an understanding that the freedom to choose and to have different views is respected and tolerated
- debating social issues with an understanding of how people can influence decision-making through the democratic process
- an appreciation that school rules protect individual children and are essential for their wellbeing and safety
- an acceptance that other people may have different faiths or beliefs to oneself (or have none), and these are accepted and tolerated without discrimination through school council elections, persuasive writing, and by promoting our Christian school values and 'Fruits of the Spirit' as guidelines for behaviour choices.

## COLLECTIVE WORSHIP POLICY

Collective Worship at Arnesby reflects the traditions of the Church of England and develops children's understanding of Anglican traditions and practice. Collective Worship makes a major contribution to upholding the religious character and Christian distinctiveness of our church school. The importance of worship is central to the life of our school and is its heartbeat, guided by our vision and the values that underpin that vision.

### Where every child shines



*"The Church of England is (along with many others) a liturgical tradition, and encountering its worship is essential to understanding it and the God in whom we believe. The seasons of the church year rehearse the drama of Jesus Christ in the context of the larger Biblical narrative, and they offer a means through which that narrative can be grasped and inhabited. Collective worship in schools, including prayer, reading, and reflecting on the Bible, liturgy, sacrament and experience of the musical and other imaginative riches of Christianity, provide a vital opportunity for this". (Church of England Vision for Education Deeply Christian, Serving the Common Good Autumn 2016)*

### AIMS AND PHILOSOPHY OF COLLECTIVE WORSHIP AT OUR SCHOOL

We believe Arnesby CE Primary School that collective worship both supports and strengthens what we aim to do in every aspect of school life. Our caring ethos, and the value which we place on the development of the whole child, spiritually, morally, socially, culturally, and intellectually is reflected in our worship.

*"May His Spirit bless us and show us how to use and apply this wisdom to lead the children entrusted to our care in worship through Jesus Christ our Lord, who said "whoever welcomes one such child in my name welcomes me" (Matthew 18:5)*

We value this special time in the school day for the space it gives children and adults to develop a reflective approach to life and the ability to express their reflections in traditionally religious ways or any other appropriate manner. Collective worship should support everyone in a holistic sense, enabling them to grow spiritually, develop and flourish.

## **Collective worship is Invitational, Inspirational and Inclusive.**

We aim to introduce children to worship in a manner appropriate to their age and understanding. We recognise that children of different faiths, or of no faith attend this school, alongside Christian children, and we are proud of that diversity. All pupils are encouraged to understand the views and beliefs of others. We recognise that in asking our children to worship we consider the background that our children come from. It is not the practice of this school to convert children.

The faith background of both the staff and the child's family is respected at all times. Children are not obliged to address God directly, in prayer, but it is expected that they are respectful while others do. Children not wishing to join in with prayer are encouraged to have a moment of reflection and stillness.

### **The aim of Collective worship is to:**

- enable children and staff to explore and celebrate the differences and diversity found in the variety of forms of worship in the Anglican Christian tradition.
- lead the school community to the 'threshold of worship' in order for them to make an informed choice about their own involvement and to consider their own personal relationship with Jesus Christ;
- seek to deepen and widen the experience of those of 'faith' and encourage those of 'no faith' so that they begin to feel for themselves something of what it means to worship;
- use celebration, silence, stilling, reflection, contemplation, meditation, prayer, song, symbols and imagery as vehicles for worship and spiritual growth;
- provide opportunities for the whole school community to address God directly through Jesus in the power of the Holy Spirit through acknowledging his presence, reflecting upon his character and giving Him praise and honour;
- use a vocabulary of worship that encourages the whole school community to attend, participate and lead worship;
- encourage all present to explore their own beliefs and understanding of God within a Christian framework by learning more about the Christian faith and by encountering Christ through worship;
- reflect upon the 'Big Questions' of life in the context of faith by raising awareness and encouraging discussion
- reaffirm, strengthen, and practise key Christian values. (e.g. love, peace, compassion, forgiveness, self-giving) and celebrate each unique individual member of the school community as made in the image of God;
- nurture and encourage respect and care for God's created world by promoting a positive attitude to environmental issues locally, nationally and globally;
- seek to provide opportunities for spiritual, social and moral development such as awe, wonder, being uplifted, elation, appreciation, gratitude, respect, and reverence;
- develop a sense of community within the school, the locality, (e.g. local church) and foster the sense of being part of a wider community through the celebration of achievements, festivals and special occasions;
- foster a concern for the needs of others.

## **CONTENT OF COLLECTIVE WORSHIP**

Worship at Arnesby generally takes place during assembly times, but may also take place in classrooms, as appropriate, for example class prayers or times of self-reflection. Collective worship might encompass concepts involving celebration of and respect to God. Worship may draw on drama, literature, music, stories from the Christian faith or from other faiths or personal experiences.

Collective worship will always include a moment for reflection and prayer. Many of the characteristics of Christianity are shared by other faiths. It may be appropriate at times to draw these comparisons. Starting points for worship reflect a wide variety of themes; these may be seasonal, topical (news related), or explore stories from other religions. When appropriate, collective worship will engage with community or national events as there is always room for spontaneity within the planned themes.

**Looking up**

**Looking out**



**Looking in**

Collective worship includes the shared language of spirituality as Looking up, Looking out and Looking in as well as ow's, wow's and now's.

Our collective worship focuses on our nine Christian values:

- **Curiosity** – opportunities for children to achieve their best and have positive learning attitudes.
- **Respect and thankfulness** – for others, our environment and celebrate our differences.
- **Independence**- a sense of responsibility for ourselves and the world around us
- **Resilience**- showing courage, determination and perseverance.
- **Forgiveness and honesty** – living by our values and morals.
- **Teamwork and Koinonia**- working together in our community with love for all.

Collective worship also includes reference to Galatians 5: 22-23 the nine Fruits of the Spirit: Love, joy, peace, patience, kindness, generosity, faithfulness, gentleness and self-control.

### **ORGANISATION OF COLLECTIVE WORSHIP**

Our acts of worship are led by the Arnesby teaching team, children, clergy, and visitors. As a school we attend services at Arnesby St. Peters Church, Arnesby Baptist Chapel and on occasions Leicester Cathedral. We welcome any governor's attendance at our worship at any time and parents also have opportunity to take part. Collective worship is planned for 20 minutes each day, usually at the end of the school day in the village hall. The whole school worships together four times a week led by members of the staff team or the clergy.

Pupils also have the opportunity to worship in key stages and in the classroom. Children are able to have an active role in leading, participating and evaluating worship (see Appendix 1 for evaluation form).

### **THEMES AND CONTENT**

Collective worship themes are planned carefully to reflect the church year, Bible teaching, the school year, celebrations and festivals of faith. There are whole school assemblies, as well as some Key Stage assemblies enabling staff to deliver more 'age specific' topics and materials.

The Headteacher and teaching staff plan and deliver assemblies in line with planned themes. There is a singing assembly to worship through song which includes reflection on the chosen theme of that week and appropriate hymns and prayers.

The range of methods may include:

- Hymns, songs, music and prayer in varied forms;
- Stories read from a Bible such as The Storyteller Bible;
- Drama and role play;

- Visual aids and props;
- Pupil contributions;
- Visiting speakers;

An example of the whole school annual Collective Worship calendar:

	THEMES	Monday	Tuesday	Wednesday	Thursday	Friday	
Liturgical calendar		ROOTS AND FRUITS MC/KW	HEADTEACHER OR CLERGY	KEY STAGE OR SHARING ASSEMBLIES	SINGING OR BIBLE STORIES	IN CLASS WORSHIP OR CLASS ASSEMBLY	
	Roots and fruits theme of Compassion	23 <sup>rd</sup> Noticing a need Mark 6.34	24 <sup>th</sup> Rev Stephen British Values	25 <sup>th</sup> Blythswood Shoe box appeal	26 <sup>th</sup> Singing EM-D	27 <sup>th</sup> In class worship BIG QUESTIONS	
Family Big questions to be explored in class this week	EARLY YEARS Myself Why am I precious?	YEAR 1 Families Why do we have a family and who is my family?	YEAR 2 Beginnings Who made the world and everything in it?	YEAR 3 Homes What makes a house a home?	YEAR 4 People Where do I come from?	YEAR 5 Ourselves Who am I?	YEAR 6 Loving Do you have to earn love?
November	School value Link: Honesty	30 <sup>th</sup> Being a good Neighbour Luke 10 25-37	31 <sup>st</sup> British Values and our Christian values	1 <sup>st</sup> Sharing assembly Endurance Class	2 <sup>nd</sup> Storyteller Bible story RJ	3 <sup>rd</sup> In class worship Picture news	
	British value link: Democracy	6 <sup>th</sup> Putting on the right attitude Colossians 3.12	7 <sup>th</sup> Remembering others	8 <sup>th</sup> Storyteller Bible story in Endurance class	9 <sup>th</sup> Sharing assembly Peace Class - classroom No VH – singing assembly in Endurance Classroom	10 <sup>th</sup> Remembrance service in church	
		13 <sup>th</sup> Having the courage to care Exodus 2.1-10	14 <sup>th</sup> In class worship School values	15 <sup>th</sup> Pyjama reading day No VH	16 <sup>th</sup> Storyteller Bible story RJ	17 <sup>th</sup> Singing assembly Carols RJ	
		20 <sup>th</sup> Coming to the rescue Luke 15 4-6	21 <sup>st</sup> Let your light shine Matthew 5:16	22 <sup>nd</sup> In class worship Picture news No VH	23 <sup>rd</sup> Give me 5 learning rules Miss Beckett	24 <sup>th</sup> Singing assembly	
		27 <sup>th</sup> God of the unexpected Luke 2.8-20	28 <sup>th</sup> Sharing assembly Courage Class	29 <sup>th</sup> School closure	30 <sup>th</sup> Storyteller Bible story RJ	1 <sup>st</sup> Singing assembly	
December	Advent	4 <sup>th</sup> Advent 1 Peace	5 <sup>th</sup> Singing Assembly	6 <sup>th</sup> British Values Democracy	7 <sup>th</sup> Nativity dress rehearsal to school 9.15	8 <sup>th</sup> Singing assembly	

The Worship outline includes the Leicester Diocese model of Gather, Engage, Respond and Send. The worship theme is illustrated using drama, artefacts, music, pictures, Anglican liturgy, Bible stories, biblical passages and quotations from significant Christian leaders.

GATHER	ENGAGE	RESPOND	SEND
<ul style="list-style-type: none"> <li>• Having a candle, Bible, cross etc... on the table when pupils enter. Does the leader light the candle or do the pupils set the CW symbols out?</li> <li>• Liturgical colours for different parts of the Christian year</li> <li>• Thought of the day displayed for pupils to reflect on when they enter.</li> <li>• Anglican greetings said at the start of CW.</li> <li>• Reflective/calm music when pupils enter.</li> <li>• A picture displayed for reflection.</li> <li>• Quote displayed for reflection.</li> </ul>	<ul style="list-style-type: none"> <li>• Reading out verses or a chapter from the old or new testament in the Bible.</li> <li>• Video to reflect the theme or festival/celebration which is the focus</li> <li>• Display pictures that show the theme or festival/celebration which is the focus of the CW.</li> <li>• Act out stories/passages from the Bible by giving pupils speaking parts.</li> <li>• Use guided meditation and invite pupils to imagine a story you read out.</li> <li>• Use hymns and songs that tell the story and</li> </ul>	<ul style="list-style-type: none"> <li>• Invite children to think of a tsp prayer to themselves. Music can be played to help.</li> <li>• Pass a heart, a stone etc. around the circle</li> <li>• Use traditional prayers such as the Lord's prayer or the Grace.</li> <li>• Pass on a sign of peace or link arms/clap hands.</li> <li>• Place a stone at the foot of a cross</li> <li>• Drop pebble in water</li> <li>• Light a candle</li> <li>• Breaking of bread</li> <li>• Write personal prayers on post-its</li> <li>• Singing a hymn or song that links to the theme of the CW.</li> </ul>	<ul style="list-style-type: none"> <li>• Share what you have learnt with others</li> <li>• Shake hands – sign of peace</li> <li>• Find a few moments in the day to say thank you to God.</li> <li>• Tell your mum/dad you love her/him</li> <li>• Care for God's world by picking up a piece of litter</li> <li>• Remember to say please and thank you</li> <li>• Anglican phrases used to send pupils out</li> <li>• Greet someone with a smile</li> <li>• Do something helpful at home</li> <li>• Invite someone lonely or isolated to join you at break time.</li> </ul>

- Welcome greeting and school vision
- The liturgy
- Short Bible story-read, enacted, read together etc.
- Time for reflection and stillness

- Prayer or Lord's Prayer
- Psalm or Song of Praise
- Liturgy or Grace/Final blessing

As an **invitational** process during worship there will be an opportunity within worship for reflection or alternatively time in class to reflect on the collective worship of the day. Resources for worship are considered within the budget allocation process.

Worship should be **inspiring** and may reflect upon big questions / wider issues or be inspired by other Christians (everyday stories)

It is important that everyone has the opportunity to engage through the language used:

- I invite you to join in with this prayer
- Would you like to help with this prayer?
- Call out/ whole school collaborative prayers

Worship should be **invitational** so that everyone should feel included:

- Whatever their faith/belief
- Whatever their learning style
- Worship in different ways, with different people leading
- Sing a variety of songs
- Consider use of language... "some people believe...", "I wonder..."

### **CPD AND GUIDANCE FOR VISITORS**

The induction process for visitors and new staff includes DBS clearance (see Safeguarding policy). Visitors to school are welcomed by a member of the staff team. Some visitors and staff will have the opportunity to observe worship in our school before being expected to take worship responsibility.

### **MONITORING AND EVALUATION**

The plan includes topics to be reflected upon by whole school and is a starting point, rather than an imperative. It includes suggestions for bible readings and songs/hymns, although these are by no means exclusive or exhaustive and may be deviated from by staff leading assemblies, if they feel there is something more appropriate.

Leaders evaluate against some of the following:

- The growth of forgiveness, respect and kindness within the school;
- Enjoyment, attention and reaction/response of pupils;
- Thoughts, questions and answers voiced by the children during assemblies;
- Feedback from staff about responses and reactions following assembly;
- Attentiveness during assemblies;
- Pupil voice feed-back from our Faith Group;

Peer observation takes place by Leaders team to monitor style, effectiveness, pupil response. The RE leader or other leaders within the school, monitor pupil views by way of 'Pupil Voice' interviews. Where possible a display may be initiated from a theme, which supports ongoing development of a given value, or participation by pupils and their views which in turn supports evaluation of worship theme.

Withdrawal from collective worship Acts of worship as identified in the Education Act 1944 and in subsequent legislation. Arnesby is a Church of England Primary School where Christian values and principles underpin the whole curriculum and the experience of daily worship by the whole school community is an important part of school life.

In order to preserve the distinctiveness of this church school community, we encourage everyone to be involved in the religious education and collective worship. Parents who have concerns should discuss them with the Headteacher in the first instance and the Chair of Governors before their children are admitted to the school. If a parent asks for their child to be wholly or partly excused from attending collective worship, the school must comply unless the request is withdrawn. Any parent who wishes to exercise this right should consult the Headteacher. By law, parents have the right to withdraw their children from collective worship.


Pupils may, on occasions, miss part of collective worship for individual support/booster work. These intervention groups always vary, so no one child would repeatedly miss worship.

Other policies that link with this policy include:

- Spirituality policy
- Religious Education Policy
- Safeguarding policy



## Appendix 1

Evaluating Our Worship	
	
Date:	
Our Worship was led by:	The candle colour was:
The time in the Christian Calendar was:	The cloth colour was:
Our theme was:	The Bible verse that our Worship related to was:
Our Worship today was special because:	How I felt about the Worship today:
What we learnt about the Christian Faith:	The role of the children who took part was:
Our Worship has challenged me to think about:	What I will remember most from the Worship today:
Today's Worship will help me in my everyday life because:	The songs of praise were:
This evaluation was completed by:	If I could change anything about today's Worship, it would be:

## Appendix 2

The vision of collective Worship in the Leicester Diocese is:

### Vision of CW in Leicester Diocese

- ▶ We all view CW as the heartbeat of our school – a chance to press pause!
- ▶ We see it as an integral part of staff and pupil wellbeing.
- ▶ Staff are present in CW and speak highly of it.
- ▶ CW is a time to reflect – learning about ourselves and others. Not acquiring knowledge as the main aim.
- ▶ Schools know the place of CW in school and that it is distinct from RE
- ▶ We all see CW as an integral part of spiritual development
- ▶ We are invitational, inclusive and inspirational
- ▶ We allow for a range of spiritual styles and expressions of worship – song / drama / reflecting / being still / listening / reading
- ▶ We allow pupils to plan and lead CW if appropriate in our context

